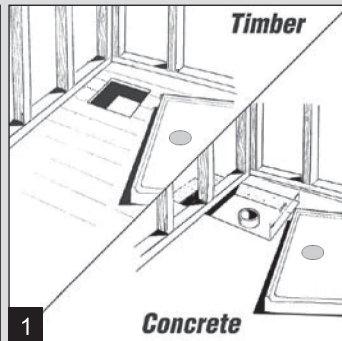
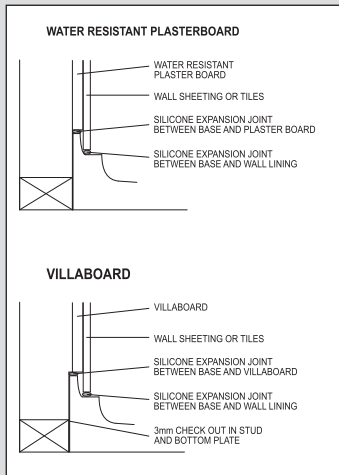




INSTALLATION INSTRUCTIONS



Water resistant plaster board installation. The SMC shower base has a 9mm tile flange. Place base against framework, install water resistant plaster board directly on top of tile flange and seal the joint with flexible silicone sealant.

Villaboard installation. When using Villaboard the SMC shower base will need to be checked into framework a minimum of 3mm. Install Villaboard directly on top of the tile flange and seal the joint with flexible sealant.

1. Floor boards or sheet flooring must cover the entire underside of the base. Cut hole through floor no greater than 200mm x 200mm (concrete should be 300mm x 300mm).

Note: If doing a renovation please check floorboards for soundness. If any rotting has occurred and flooring may need replacing.

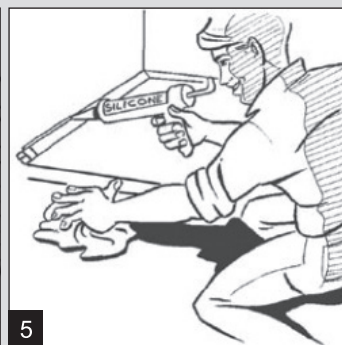
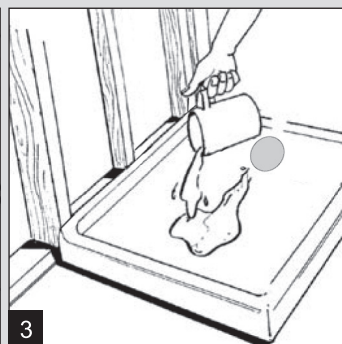
2. Prior to installing place the base in position and check the level on both sides and front and rear. This will permit the base to drain effectively as it has inbuilt fall to waste outlet. If the substrate is completely level the SMC shower base may be installed using silicone over entire base area.

Note: If your floor is not level use a cement based tile adhesive spread on floor with a 12mm notched trowel to ensure base is fully supported.

3. Finally: it is imperative to test for water run-off to the waste outlet prior to lining shower walls. this will ensure base is draining correctly. Failure to do so will breach the guarantee.

4. It is recommended that you cover and protect the base until it comes into service.

5. Silicone the bottom edge of the shower wall to the base before the shower screen is fitted. Silicone is also required around the tap spindles and shower rose outlet.



Cleaning

The surface of this base will resist surface build-up. However, to preserve its high lustre it may be cleaned with a soft cloth using warm soapy water or Mild household detergent.

Note: Some hair dyes and colouring shampoos may cause staining to this Shower Base that is difficult to remove, and should NOT be used in the shower with this base. Such hair colouring should be done over surfaces that have a vitrified finish, like basins, or steel baths. Staining of this base resulting from the use of colouring products will NOT BE COVERED by the PRODUCT WARRANTY.

Avoid All Forms Of Abrasive

If accidental abrasions occur the surface brilliance can be restored by polishing with a silicone-based polish.

Warranty

The Marbletrend SMC shower base has a one year warranty against faulty materials or workmanship. Warranty will be voided if temperature from tap exceeds 55°C and above instructions are not adhered to exactly.

Refer to www.marbletrend.com.au for full terms and conditions